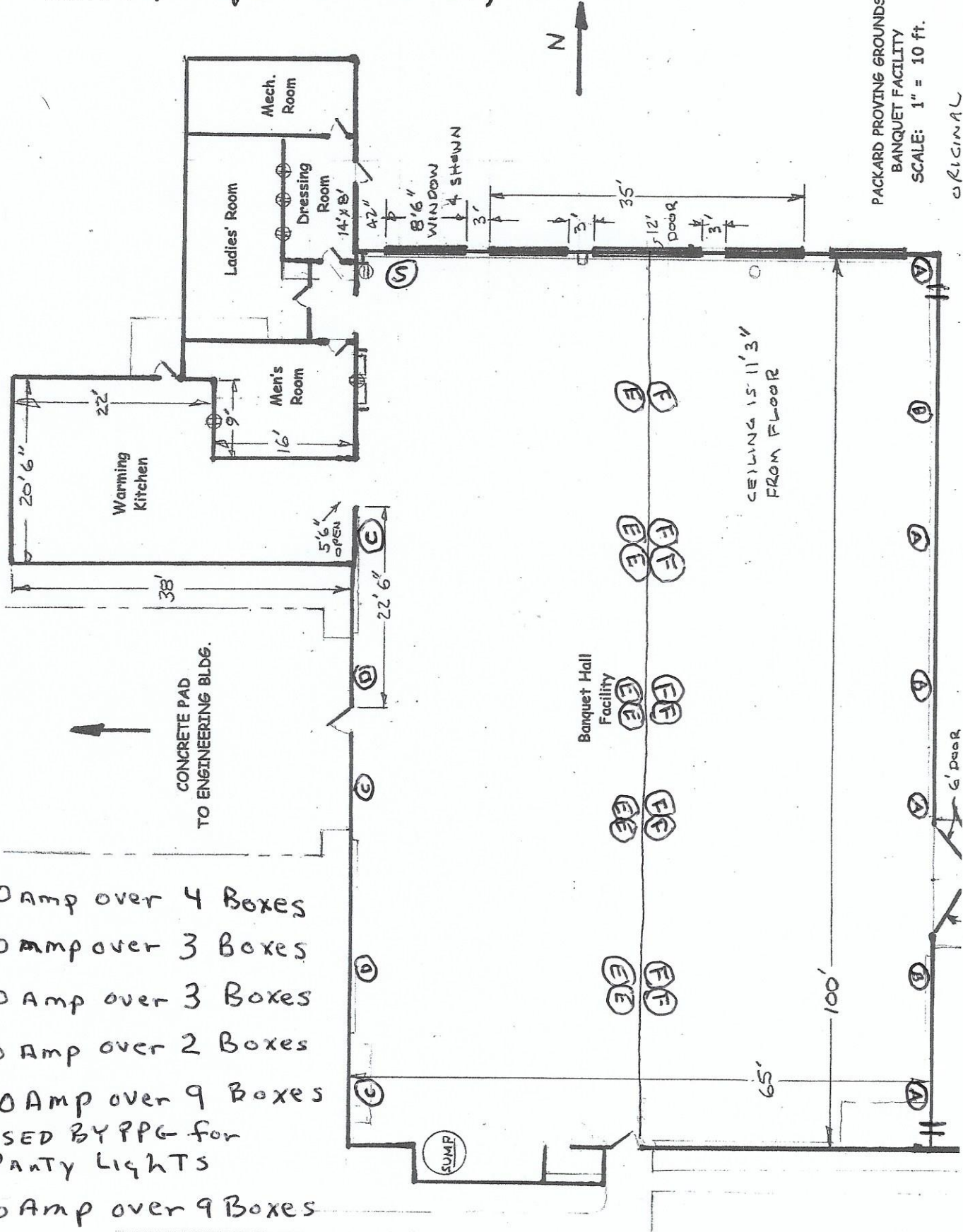


(A), (B), (C) + (D) are along walls 4' from floor

(E) + (F) are on ceiling 11' from floor

(S) ceiling light switches, 6 in all



PACKARD PROVING GROUNDS  
BANQUET FACILITY  
SCALE: 1" = 10 ft.  
ORIGINAL

- (A) = 20 Amp over 4 Boxes
  - (B) = 20 Amp over 3 Boxes
  - (C) = 20 Amp over 3 Boxes
  - (D) = 20 Amp over 2 Boxes
  - (E) = 20 Amp over 9 Boxes
  - (F) = 20 Amp over 9 Boxes
- USED BY PPG for PARTY LIGHTS